

The SAS System

Obs	p	q	ps	di	pf
1	9.88	19.89	19.97	21.03	10.52
2	13.41	13.04	18.04	20.43	19.67
3	11.57	19.61	22.36	18.70	13.74
4	13.81	17.13	20.87	15.25	17.95
5	17.79	22.55	19.79	27.09	13.71
6	12.84	6.37	15.98	24.89	24.95
7	18.11	15.02	17.94	22.94	24.17
8	13.52	10.22	17.09	21.96	23.61
9	22.45	23.64	22.72	38.85	19.52
10	16.55	16.12	15.74	31.69	20.03
11	19.39	24.55	24.64	26.23	15.38
12	22.29	18.92	23.70	30.07	22.98
13	16.65	11.94	15.93	33.67	25.76
14	21.65	18.93	23.34	32.90	25.17
15	17.56	12.60	15.21	37.46	25.82
16	20.40	20.49	26.04	35.18	19.31
17	26.85	22.94	22.95	43.81	26.02
18	29.98	21.08	27.10	41.21	29.65
19	23.59	16.68	23.65	38.20	27.45
20	19.11	17.61	20.06	43.98	18.00
21	15.41	16.62	26.38	37.64	18.87
22	25.81	20.99	24.28	45.24	24.58
23	27.67	24.53	26.64	48.15	25.25
24	23.57	19.67	22.65	36.70	24.24
25	22.25	23.29	19.68	43.92	22.63
26	25.60	16.64	23.82	46.03	27.35
27	27.90	20.81	28.98	46.32	27.80
28	27.00	14.95	18.52	48.94	30.34
29	29.48	26.27	28.16	51.25	24.12
30	35.15	20.65	28.43	48.36	34.01

The SAS System

The REG Procedure
Model: MODEL1
Dependent Variable: p

Number of Observations Read	30
Number of Observations Used	30

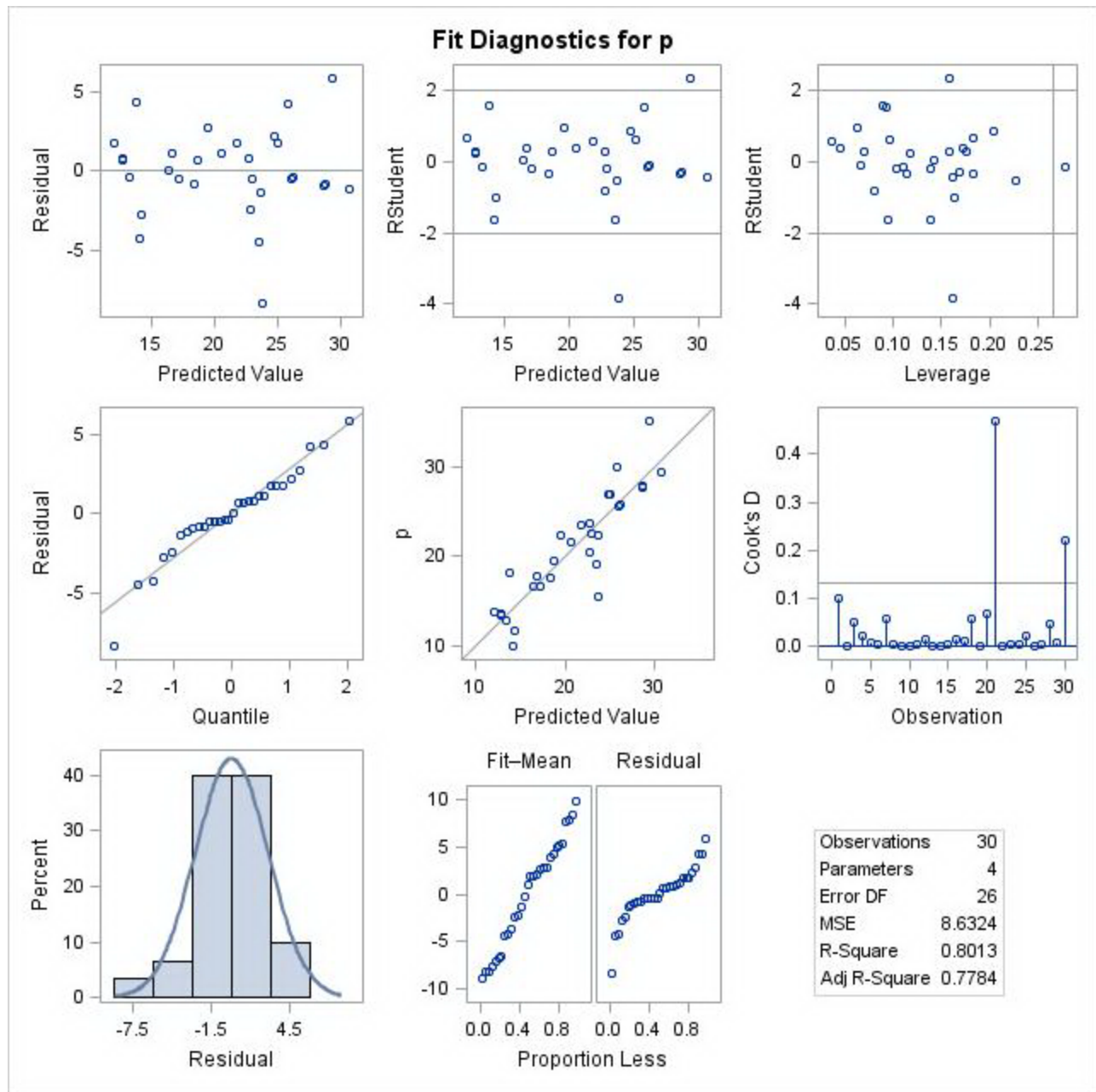
Analysis of Variance					
Source	DF	Sum of Squares	Mean Square	F Value	Pr > F
Model	3	905.16615	301.72205	34.95	<.0001
Error	26	224.44193	8.63238		
Corrected Total	29	1129.60808			

Root MSE	2.93809	R-Square	0.8013
Dependent Mean	20.90800	Adj R-Sq	0.7784
Coeff Var	14.05248		

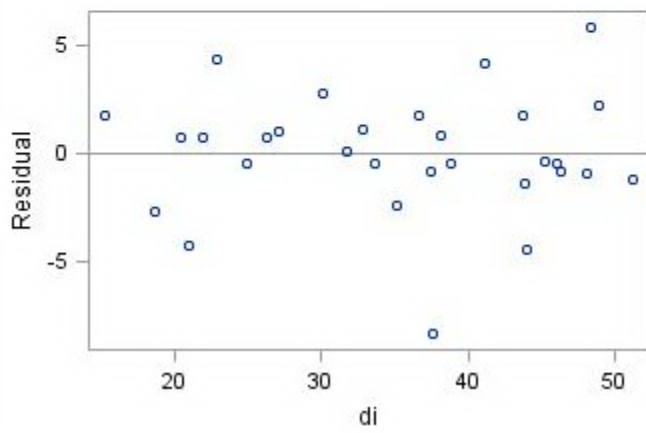
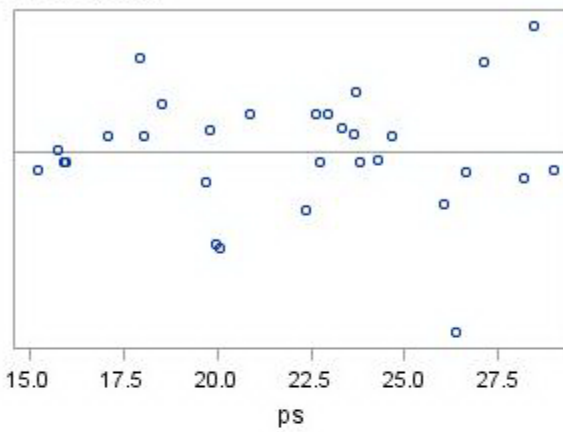
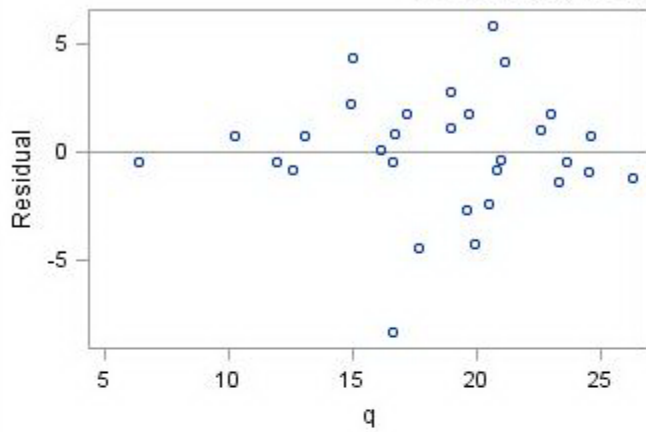
Parameter Estimates					
Variable	DF	Parameter Estimate	Standard Error	t Value	Pr > t
Intercept	1	-4.53983	3.02908	-1.50	0.1460
q	1	0.05040	0.16625	0.30	0.7642
ps	1	0.45357	0.19799	2.29	0.0303
di	1	0.41194	0.06085	6.77	<.0001

The SAS System

The REG Procedure
Model: MODEL1
Dependent Variable: p



Residual by Regressors for p



TWO STAGE LEAST SQUARES

The SYSLIN Procedure First Stage Regression Statistics

Model	First St
Dependent Variable	p

Analysis of Variance					
Source	DF	Sum of Squares	Mean Square	F Value	Pr > F
Model	3	1003.864	334.6213	69.19	<.0001
Error	26	125.7441	4.836313		
Corrected Total	29	1129.608			

Root MSE	2.19916	R-Square	0.88868
Dependent Mean	20.90800	Adj R-Sq	0.87584
Coeff Var	10.51828		

Parameter Estimates					
Variable	DF	Parameter Estimate	Standard Error	t Value	Pr > t
Intercept	1	-10.8375	2.477639	-4.37	0.0002
ps	1	0.569382	0.108884	5.23	<.0001
di	1	0.253416	0.053509	4.74	<.0001
pf	1	0.451302	0.092631	4.87	<.0001

Model	First St
Dependent Variable	q

Analysis of Variance					
Source	DF	Sum of Squares	Mean Square	F Value	Pr > F
Model	3	430.3826	143.4609	19.97	<.0001
Error	26	186.7542	7.182854		
Corrected Total	29	617.1368			

Root MSE	2.68008	R-Square	0.69739
Dependent Mean	18.45833	Adj R-Sq	0.66247
Coeff Var	14.51965		

Parameter Estimates					
Variable	DF	Parameter Estimate	Standard Error	t Value	Pr > t
Intercept	1	7.895099	3.019461	2.61	0.0147
ps	1	0.656402	0.132695	4.95	<.0001
di	1	0.216716	0.065211	3.32	0.0026

pf	1	-0.50698	0.112888	-4.49	0.0001
----	---	----------	----------	-------	--------

TWO STAGE LEAST SQUARES

The SYSLIN Procedure Two-Stage Least Squares Estimation

Model	DEMAND
Dependent Variable	p

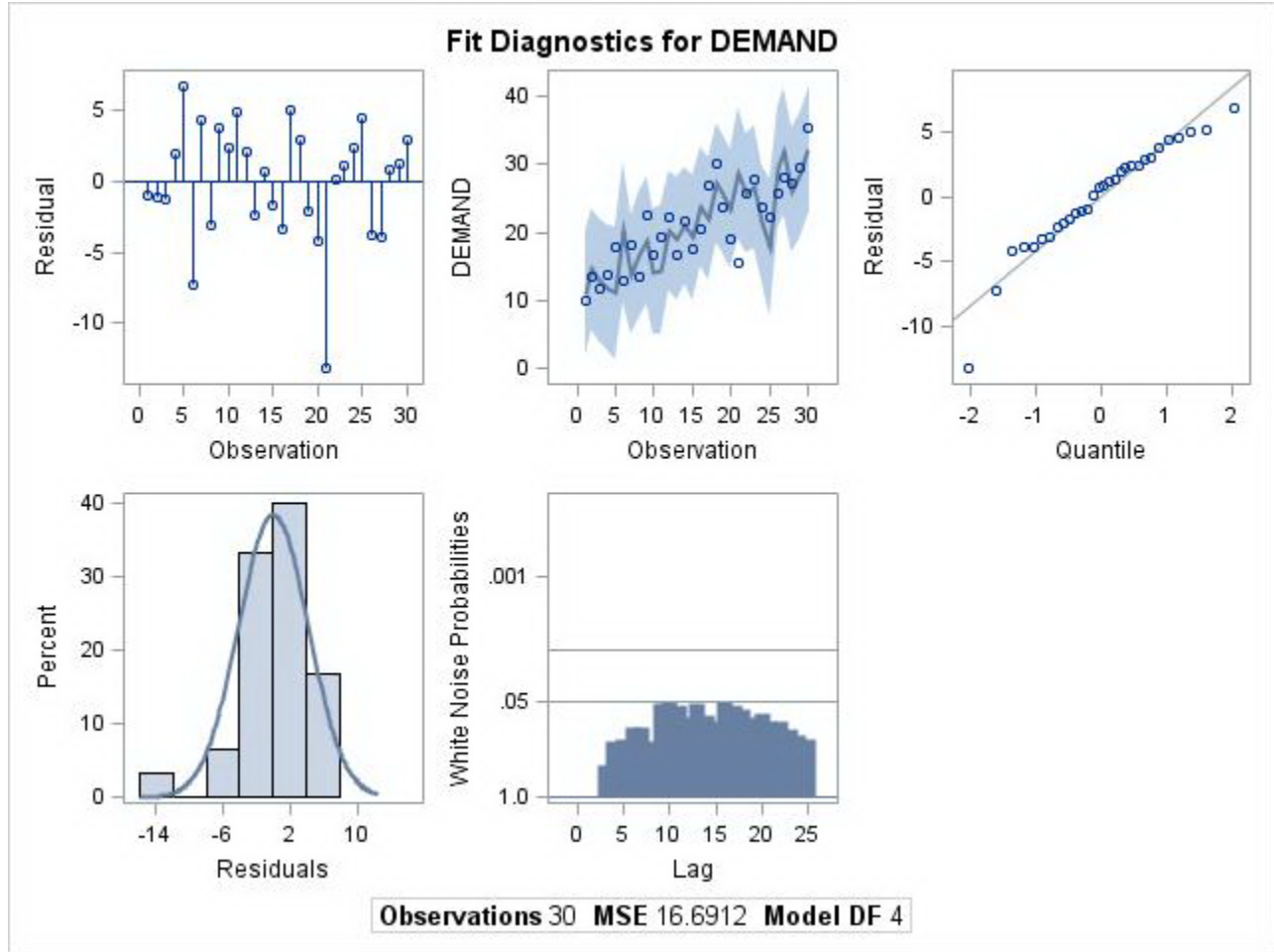
Analysis of Variance					
Source	DF	Sum of Squares	Mean Square	F Value	Pr > F
Model	3	1003.864	334.6213	17.37	<.0001
Error	26	500.7361	19.25908		
Corrected Total	29	1129.608			

Root MSE	4.38852	R-Square	0.66720
Dependent Mean	20.90800	Adj R-Sq	0.62880
Coeff Var	20.98966		

Parameter Estimates					
Variable	DF	Parameter Estimate	Standard Error	t Value	Pr > t
Intercept	1	-3.80947	4.217699	-0.90	0.3747
q	1	-0.89017	0.364608	-2.44	0.0217
ps	1	1.153694	0.346180	3.33	0.0026
di	1	0.446331	0.085235	5.24	<.0001

TWO STAGE LEAST SQUARES

The SYSLIN Procedure Two-Stage Least Squares Estimation



TWO STAGE LEAST SQUARES

The SYSLIN Procedure Two-Stage Least Squares Estimation

Model	SUPPLY
Dependent Variable	q

Analysis of Variance					
Source	DF	Sum of Squares	Mean Square	F Value	Pr > F
Model	2	427.2878	213.6439	95.26	<.0001
Error	27	60.55457	2.242762		
Corrected Total	29	617.1368			

Root MSE	1.49759	R-Square	0.87587
Dependent Mean	18.45833	Adj R-Sq	0.86668
Coeff Var	8.11333		

Parameter Estimates					
Variable	DF	Parameter Estimate	Standard Error	t Value	Pr > t
Intercept	1	20.03280	1.160349	17.26	<.0001
p	1	1.013945	0.070922	14.30	<.0001
pf	1	-1.00091	0.078293	-12.78	<.0001

TWO STAGE LEAST SQUARES

The SYSLIN Procedure Two-Stage Least Squares Estimation

